

MORGAN AND MORECAMBE OFFSHORE WIND FARMS: TRANSMISSION ASSETS

Change Request Public Rights of Way Plan

Deadline: Deadline 4
8 August 2025
Rev: F01

MOR001-FLO-CON-CAG-PLN-0013
MRCNS-J3303-JVW-19177

PINS Reference: EN020028
APFP Regulations: 5(2)(k)
Document reference: S_MMCR_12

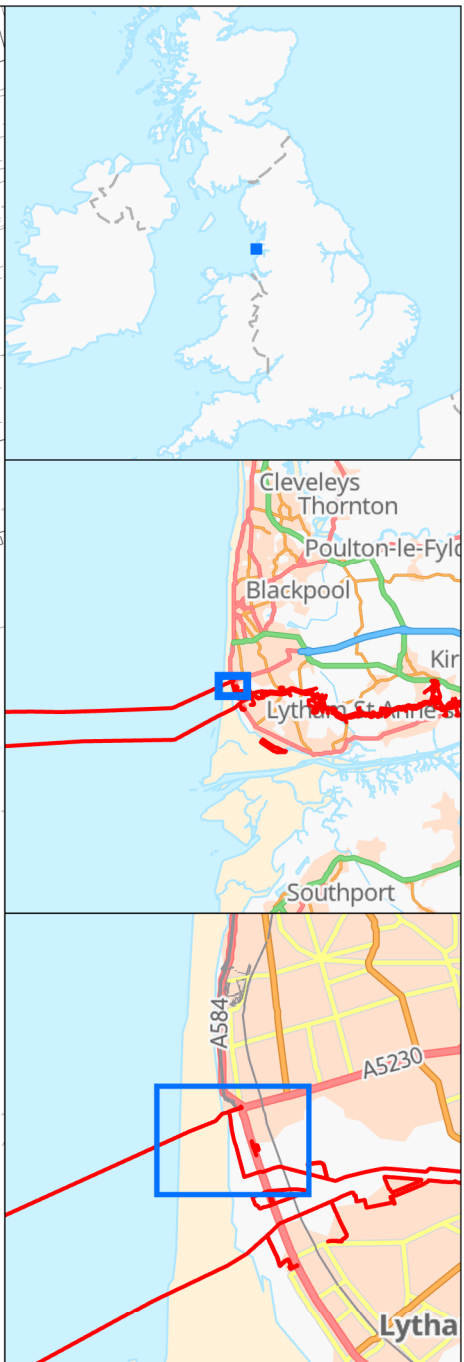
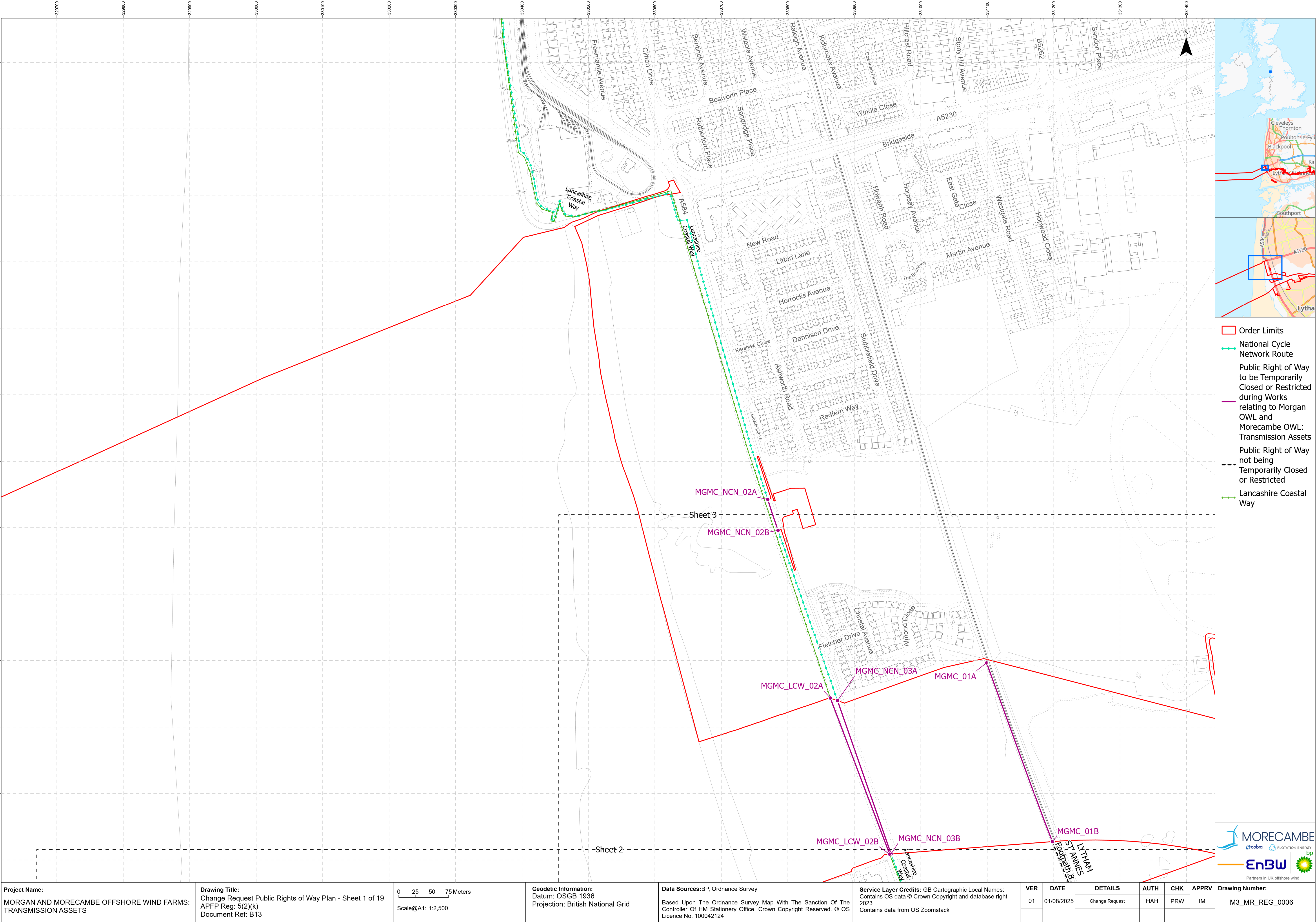
Document status					
Version	Purpose of document	Approved by	Date	Approved by	Date
F01	Deadline 4	HK	August 2025	IM	August 2025

Prepared by:

**Morgan Offshore Wind Limited,
Morecambe Offshore Windfarm Ltd**

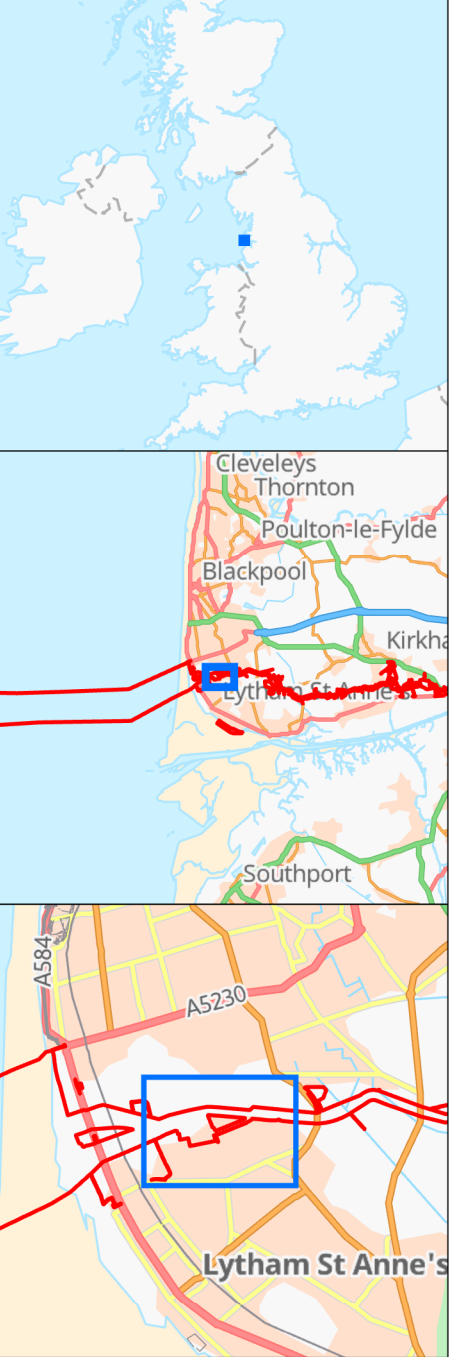
Prepared for:

**Morgan Offshore Wind Limited,
Morecambe Offshore Windfarm Ltd**



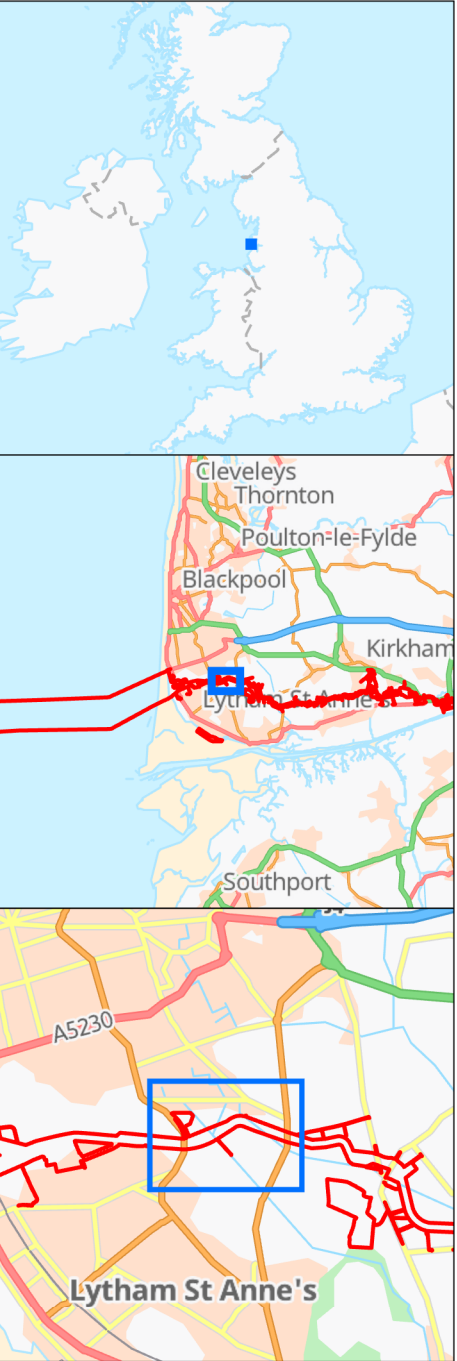
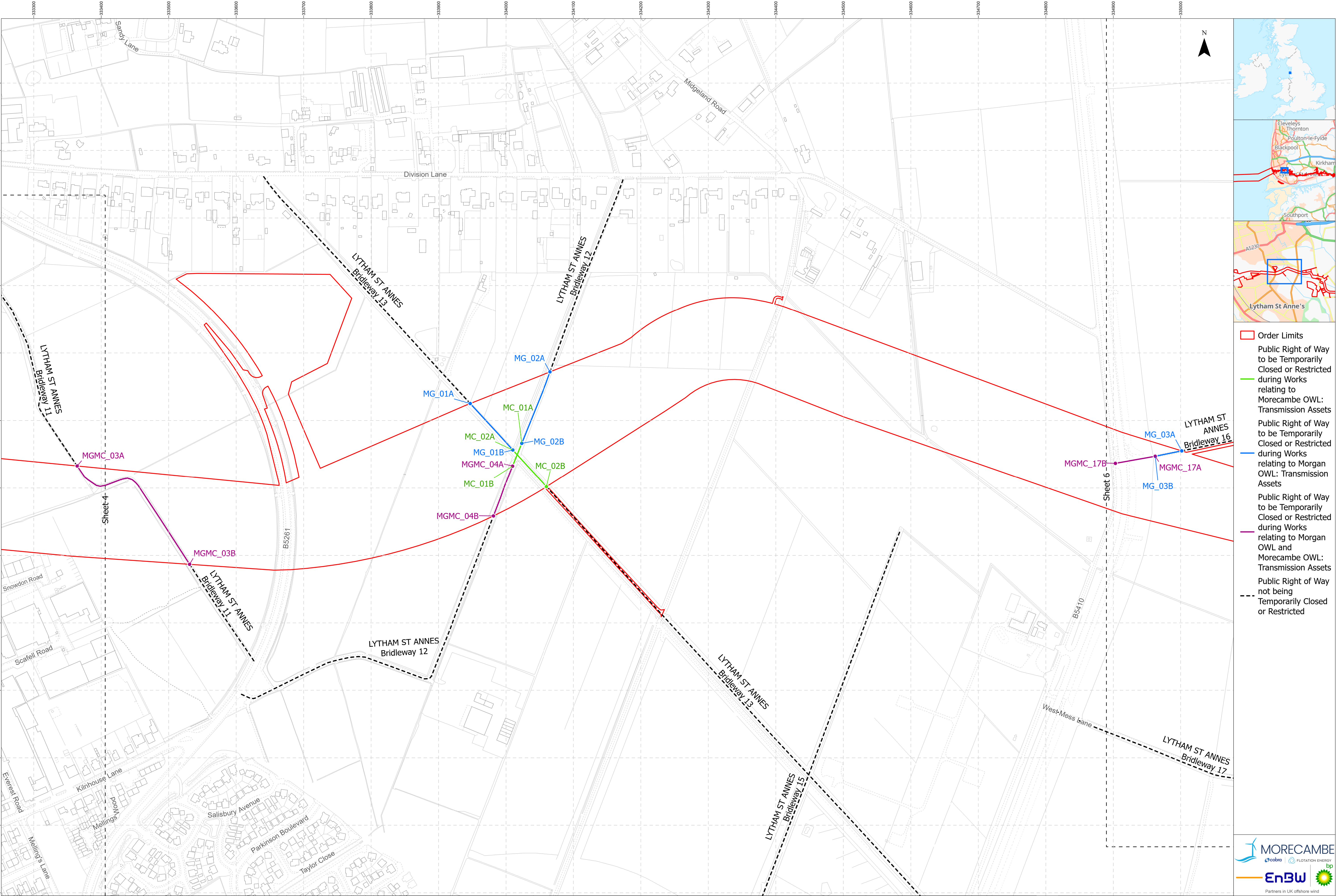
- Order Limits
- National Cycle Network Route
- Public Right of Way to be Temporarily Closed or Restricted during Works relating to Morgan OWL and Morecambe OWL: Transmission Assets
- Public Right of Way not being Temporarily Closed or Restricted
- Lancashire Coastal Way





- Order Limits
- Public Right of Way to be Temporarily Closed or Restricted during Works relating to Morgan OWL and Morecambe OWL: Transmission Assets
- Public Right of Way not being Temporarily Closed or Restricted

Project Name: MORGAN AND MORECAMBE OFFSHORE WIND FARMS: TRANSMISSION ASSETS		Drawing Title: Change Request Public Rights of Way Plan - Sheet 4 of 19 APFP Reg: 5(2)(k) Document Ref: B13		Geodetic Information: Datum: OSGB 1936 Projection: British National Grid		Data Sources: BP, Ordnance Survey Based Upon The Ordnance Survey Map With The Sanction Of The Controller Of HM Stationery Office. Crown Copyright Reserved. © OS Licence No. 100042124		Service Layer Credits: GB Cartographic Local Names: Contains OS data © Crown Copyright and database right 2023 Contains data from OS Zoomstack		VER 01	DATE 01/08/2025	DETAILS Change Request	AUTH HAH	CHK PRW	APPRV IM	Drawing Number: M3_MR_REG_0006
---------------------------------------------------------------------------------------	--	-----------------------------------------------------------------------------------------------------------------------------	--	---------------------------------------------------------------------------------------	--	--------------------------------------------------------------------------------------------------------------------------------------------------------------------------------------------------	--	----------------------------------------------------------------------------------------------------------------------------------------------------------	--	------------------	---------------------------	----------------------------------	--------------------	-------------------	--------------------	------------------------------------------



- Order Limits
- Public Right of Way to be Temporarily Closed or Restricted during Works relating to Morecambe OWL: Transmission Assets
- Public Right of Way to be Temporarily Closed or Restricted during Works relating to Morgan OWL: Transmission Assets
- Public Right of Way to be Temporarily Closed or Restricted during Works relating to Morgan OWL and Morecambe OWL: Transmission Assets
- Public Right of Way not being Temporarily Closed or Restricted

